

CLAYTON UTZ

Ann Thomson

The Clayton Utz Art Partnership



Ann Thomson

Artworks courtesy of Ann Thomson.
Ann Thomson is represented by
Defiance Gallery, Sydney



Ann Thomson is one of Australia's most eminent contemporary painters. She is widely known for her vibrant, expressive compositions and was once described by the late Edmund Capon as 'one of the most interesting and intuitive artists in Australia today'.

Thomson's works oscillate between abstraction and figuration. Her paintings are not intended to replicate a scene or a particular landscape, but rather evoke a sense of place.

"To paint a specific subject is just not my way of working. I have to be more open. It's like opening another door that is to do with trust, it's to do with memory, and having the knowledge that when you start painting the creative process begins. Too much thinking about it gets in the way".

Since graduating from the National Art School in 1962 she has had countless exhibitions throughout Australia and overseas. She has been the recipient of a number of prizes and awards including the Wynne Prize, Sydney Morning Herald Art Prize, Kedumba Drawing Prize and Geelong Contemporary Art Prize.

Her work is included in many important public collections including the National Gallery of Australia, Art Gallery of NSW, Queensland Art Gallery, Newcastle Regional Art Gallery, Macquarie Bank Collection, the Tyssen-Bornemisza Collection, Madrid and Villa Haiss Museum, Germany.

In 2015 she was honoured with a Fellowship by the National Art School, Sydney. NAS followed this with a survey of her work. 2024 sees another major survey exhibition of her career, curated by Terence Maloon, presented in January-March at S.H. Ervin Gallery in Sydney. This will tour to Orange Regional Gallery later this year confirming without doubt the stature of Ann Thomson within the canons of Australian art.

The Clayton Utz Art Partnership brings together a unique collaboration between two outstanding Australian artists and our firm.

Each exhibition provides a platform to display the creations of two contemporary artists in a corporate office setting. This exhibition space delivers a distinctive visual art experience, allowing clients to closely engage with a diverse selection of artwork.

Our Sydney office is pleased to present a duo of exhibitions by Ann Thomson and Madeleine Pfull. This intriguing pair of exhibitions celebrates two pioneering female Australian artists, generations apart, each expressive and gestural painters with unique visions in either landscape or portrait painting.

Ann Thomson is one of the most respected practising artists in Australia, a pioneer in person and practice. Thomson rose to prominence in a period with only minimal recognition given to female artists - her peers were the likes of Fred Williams, Charles Blackman, Brett Whitely and John Olsen. She was one of the first artists to show at the iconic Watters Gallery, and also taught in all the major art schools. Thomson's career is "rich in experimentation and invention" - for her painting is about creativity and the quest to understand where creativity comes from. Her landscapes are not about specific places - they come more from memory and "having the knowledge that when you start painting the creative process begins."

Impressively, young career artist Madeleine Pfull is herself a pioneer but on the international stage, having obtained representation by leading US gallery Salon Nino Mier even before her Australian career had gained full force. Experimentation and expressive creativity is also present in the works of Madeleine Pfull, who paints portraits of female characters caught in the midst of everyday activities. Pfull often creates dual portraits to explore the idea of the animated painting; this results in pictures that seem to come alive, whilst also slowing down the process of looking for the viewer.

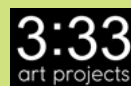
As with Thomson's practice, process and development is of utmost importance to Madeleine Pfull. Sourcing costumes and props, dressing up, and photography are all part of Pfull's 'pre-painting' practice, with the resulting paintings a display of the complexity and richness of life.

The Art Partnership is a truly exciting initiative and demonstrates our pride as an Australian firm committed to the cultural sector, and the broader creative communities in which we live and work.

We hope you enjoy being part of it.

Development & Curatorial Partner
(For Enquiries)
info@333artprojects.com

Availability of artworks is subject to change. All prices include GST.



CLAYTON UTZ

Click each image to explore Ann Thomson work in our interactive guide.





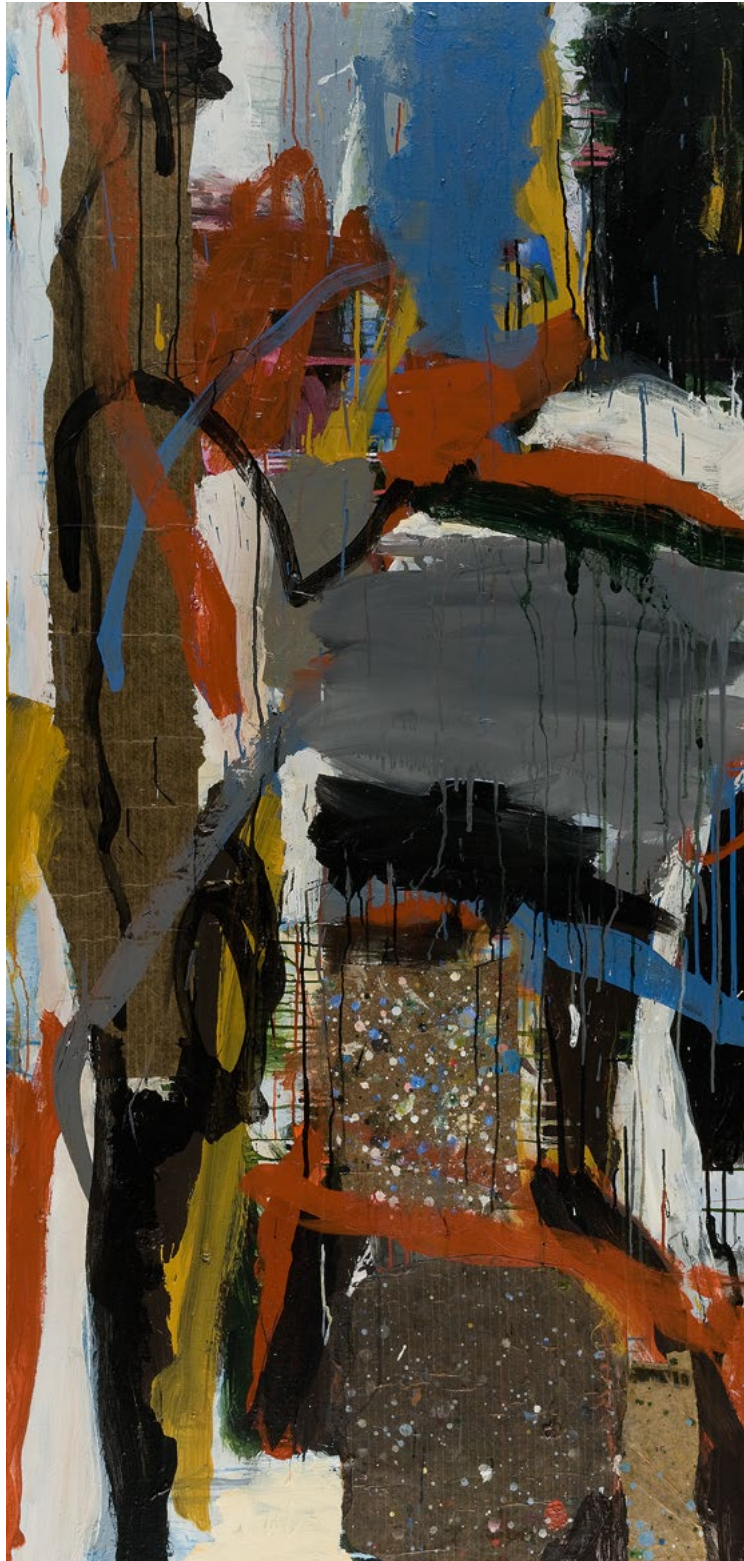
Moving Mountain
2010
acrylic & tarred paper
on Belgian linen
152 x 214 cm
\$40,000



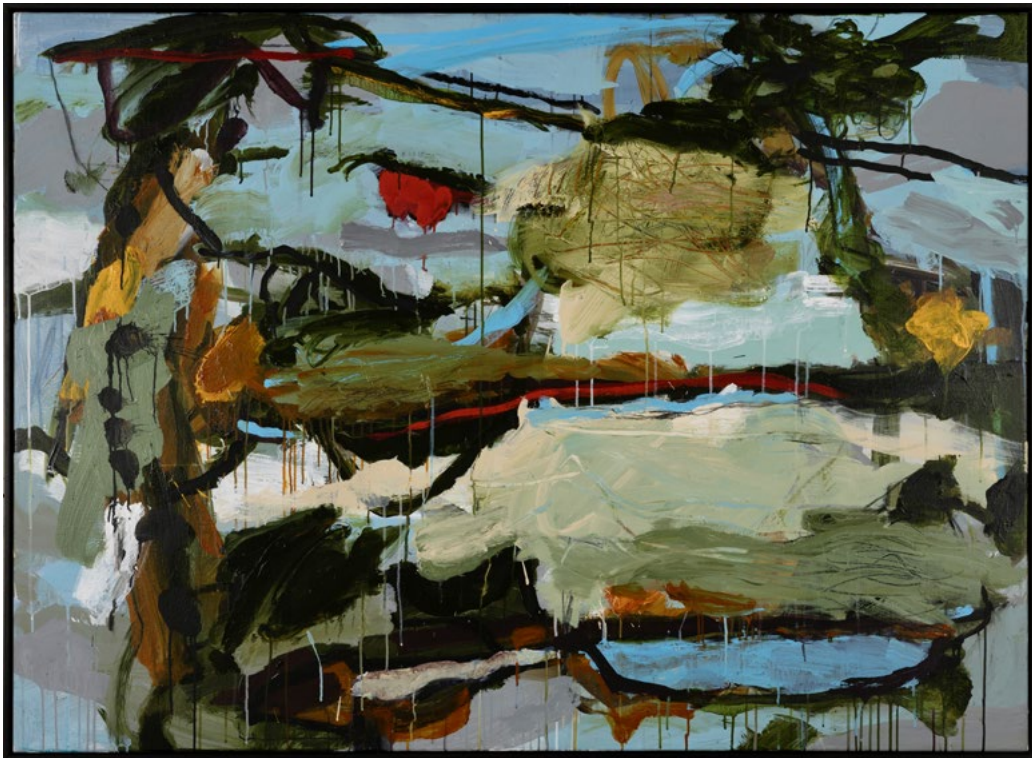
Heritage
2016
acrylic on Belgian linen
154 x 213 cm
\$40,000



Quantum Morning
2016
acrylic & tarred paper
on Belgian linen
153 x 183 cm
\$38,000



Centauri
2012
acrylic & tarred paper
on Belgian linen
192 x 92 cm
\$26,000



When Dreams Gather
2013
oil on Belgian linen
122 x 168 cm (framed)
\$30,000



Gird
2004
oil on Belgian linen
122 x 153 cm
\$28,000



Compound Interest
2020
acrylic & tarred paper
on Belgian linen
181 x 91 cm
\$26,000



Maja
2014
acrylic & tarred paper
on Belgian linen
153 x 122 cm
\$26,000



Warrior
2019
acrylic & tarred paper
on Belgian linen
170 x 91 cm
\$24,000



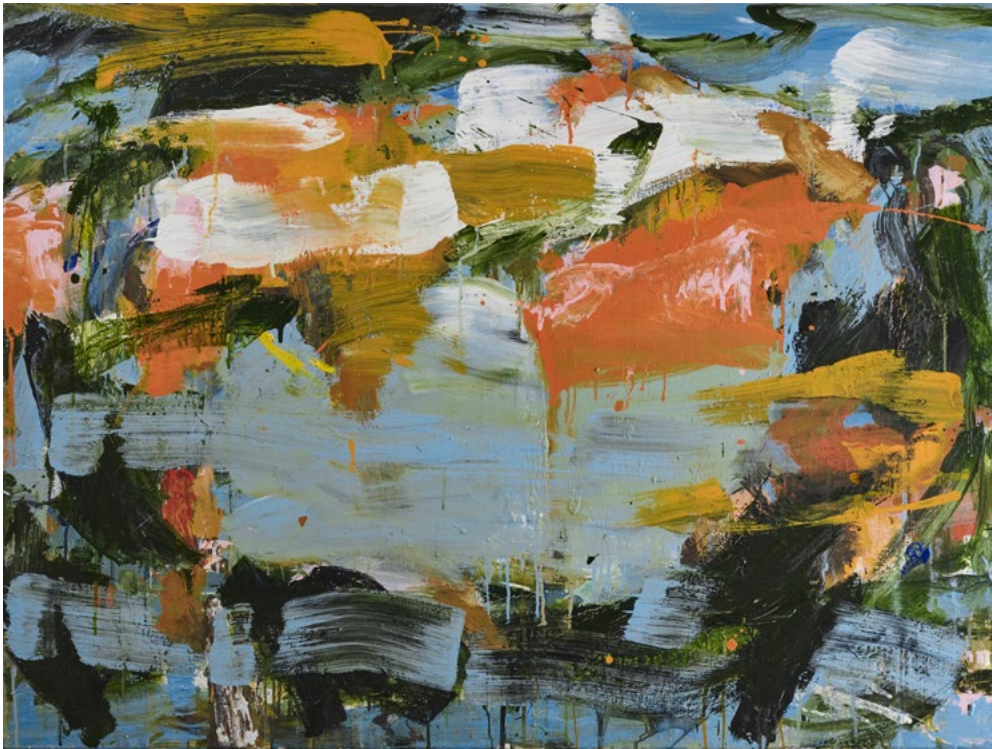
Rough with Age
2010
acrylic & tarred paper
on Belgian linen
166 x 82 cm
\$24,000



Transient
2008
acrylic on Belgian linen
122 x 122 cm
\$24,000



Utopia
2012
acrylic & tarred paper
on Belgian linen
92 x 122 cm (framed)
\$22,000



Waterscape
2023
acrylic on canvas
92 x 123 cm
\$22,000



After Hong Kong VI
2019
acrylic & tarred paper
on Belgian linen
122 x 91 cm
\$22,000



After Rain
2022
acrylic on Belgian linen
53 x 63 cm
\$6,900



Vibrato II
2014
gouache on paper
51 x 35 cm
66 x 52 cm (framed)
\$5,000



Aria IV
2014
gouache on paper
35 x 51 cm
52 x 66 cm (framed)
\$5,000



Newhaven Series XXII
2018
gouache on paper
29 x 38 cm
50 x 60 cm (framed)
\$3,000



Newhaven Series XXIII
2018
gouache on paper
29 x 38 cm
52 x 60 cm (framed)
\$3,000



Jamberoo
2017
gouache on paper
38 x 28 cm
58 x 47 cm (framed)
\$3,000



Submerged
2023
gouache on paper
28 x 38 cm
45 x 54 cm (framed)
\$3,000



Elegy II
2014
gouache on paper
32 x 24 cm (unframed)
\$2,200

CLAYTON UTZ

