



CLAYTON UTZ

Salvatore Zofrea

The Clayton Utz Art Partnership

Salvatore Zofrea

Artworks courtesy of Salvatore Zofrea.
Salvatore Zofrea is represented by
Australian Galleries,
Sydney, and Melbourne.

Photo by Effy Alexakis



Painter and printmaker Salvatore Zofrea was born in Italy, arriving in Australia in 1956 at the age of 9. After leaving school and working for several years, he attended the Julian Ashton Art School (1961-3).

Over the past 40 years, he has held solo exhibitions throughout Australia, and internationally in Rome. His work has also been featured in group exhibitions at the National Gallery of Australia and the Art Gallery of New South Wales.

Zofrea's large commissioned works include his '150 Years of the Sydney Morning Herald' mural (1979), the State Bank of New South Wales mural (1985) and a fresco for the Sydney Opera House Trust (1993).

In 1979, his 'Psalm23' was acquired by the Vatican, Rome, for its collection.

In 1982 he received a Power Bequest award of 6 months residence in Paris, and a Churchill Fellowship in 1986 to study fresco technique in Florence with master of fresco Leonetto Tintori.

Zofrea has won the Sulman Prize three times (1977, 1979 and 1982) and is a many-times finalist in the Archibald and Wynne prizes.

In 1992 the late Art Gallery of NSW director, Edmund Capon, arranged for a selection of Zofrea's 'Psalms' series to be displayed in the Art Gallery of NSW and to tour NSW Regional Art Galleries. In 1996 he was made a Cavaliere (Knight) by the Italian Government for services to the Arts.

From 1994 to 1999 he created the 'Appassionata' series of 100 autobiographical woodcuts, exhibited at the Art Gallery of NSW, and touring nationally prior to being acquired by the Gallery. In 2000, the National Portrait Gallery of Australia exhibited his '50 Portraits' which then toured NSW Regional Galleries.

In 2014, he was awarded an Order of Australia (OAM) for services to the Arts.

Currently, Zofrea is working on his 'Four Circles' series, depicting Australian wildflowers in their natural light at various times of the day - morning, midday, afternoon and evening. Each circle consists of 25 panels, each one being 153cm high x 122cm wide, totalling 30 metres in overall length.

Seven monographs on his life and work have been produced and four films, including Richard Mordaunt's Salvatore Zofrea – Master of Light (2016).

The Clayton Utz Art Partnership brings together a unique collaboration between two outstanding Australian artists and our firm.

Each exhibition provides a platform to display the creations of two contemporary artists in a corporate office setting. This exhibition space delivers a distinctive visual art experience, allowing clients to closely engage with a diverse selection of artwork.

Our Sydney office is pleased to present a duo of exhibitions by Salvatore Zofrea and Benedict dos Remedios. This pairing invites a close look at the artists' exploration of the natural world, with a particular focus on floral subjects.

Since the 1980s Zofrea has been based in Kurrajong, NSW, where he is surrounded by a ten-acre garden of Indigenous and exotic plants that has been the subject of much of his work. Zofrea has been a finalist in the Archibald, Wynne and Sulman Prizes on thirty-eight occasions, and he has won the Sulman Prize three times. Seven monographs on his life and work, including four documentaries,

have been produced, the most recent being Richard Mordaunt's Salvatore Zofrea – Master of Light in 2016.

Benedict dos Remedios is a Sydney based artist who has been exhibiting in Sydney and New York City since the early 2000s. His most recent series is a study of the natural beauty of exotic orchids. He describes his paintings as 'a modern abstracted take on traditional botanical paintings.'

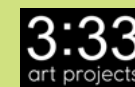
While both artists have worked in the past on different subject matter - Zofrea is well known for his major mural series and dos Remedios for his wave paintings produced during a 10 year stint in NYC - it is their respective works based on plant life that connect them for this special pairing.

The Art Partnership is a truly exciting initiative and demonstrates our pride as an Australian firm committed to the cultural sector, and the broader creative communities in which we live and work.

We hope you enjoy being part of it.

Development & Curatorial Partner
(For Enquiries)
info@333artprojects.com

Availability of artworks is subject to change. All prices include GST.



CLAYTON UTZ

Click each image to explore Salvatore Zofrea's work in our interactive guide.





Midday light

2021

oil and lapis lazuli on canvas

152 x 3050 cm

\$1,250,000

panels 1 to 25



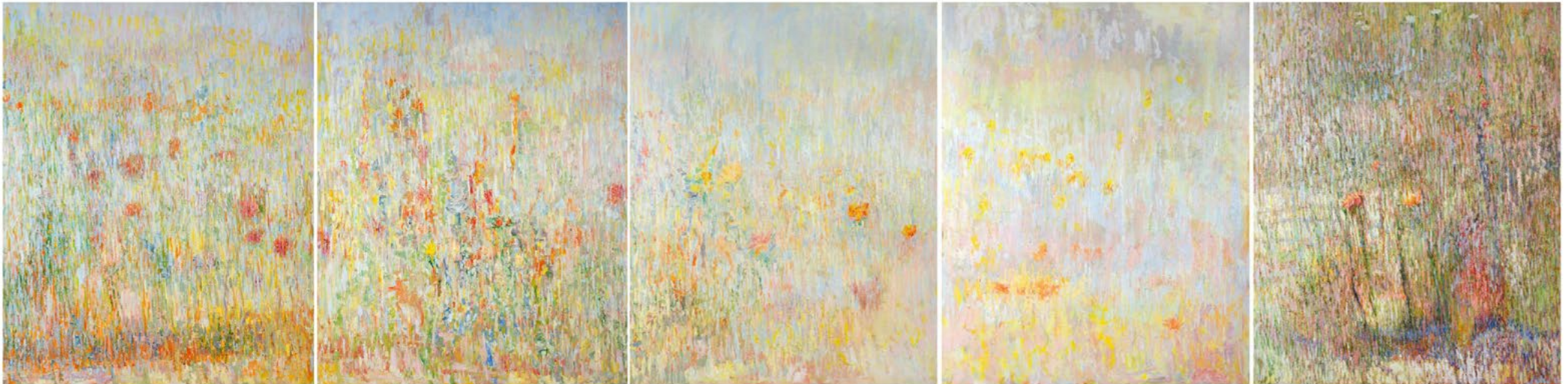
Midday light
2021
oil and lapis lazuli on canvas
152 x 3050 cm
\$1,250,000
detail panels 1-5



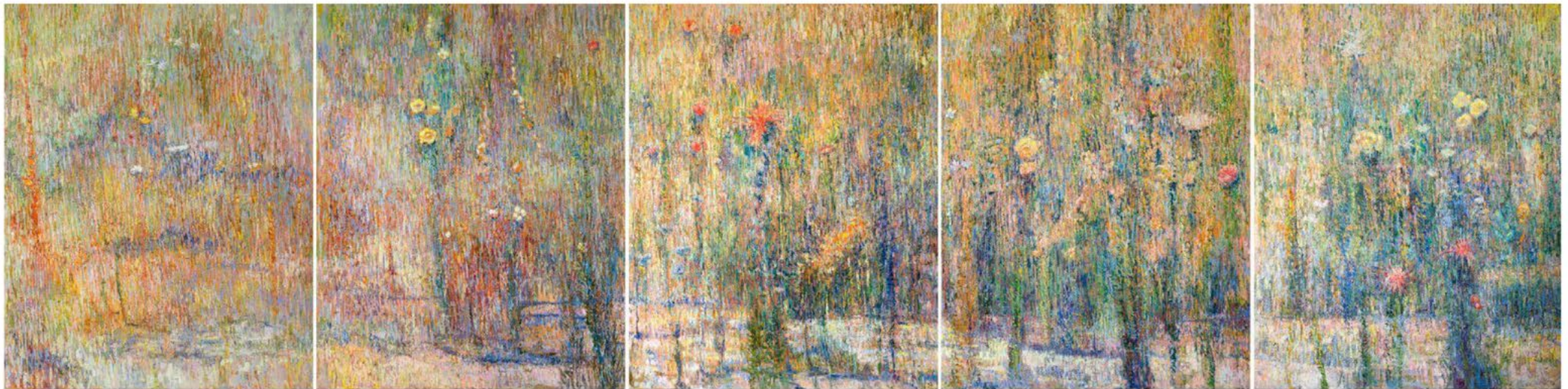
Midday light
2021
oil and lapis lazuli on canvas
152 x 3050 cm
\$1,250,000
detail panels 6-10



Midday light
2021
oil and lapis lazuli on canvas
152 x 3050 cm
\$1,250,000
detail panels 11-15



Midday light
2021
oil and lapis lazuli on canvas
152 x 3050 cm
\$1,250,000
detail panels 16-20



Midday light
2021
oil and lapis lazuli on canvas
152 x 3050 cm
\$1,250,000
detail panels 21-25



Daisies with wax flowers
2008
hand coloured woodcut on Japanese Hitachi
paper
55 x 75 cm
Edition 9/20 (framed)
\$2,500



Tea tree with bronze pigeon
2008
hand coloured woodcut with lapis lazuli on Japanese Hitachi
paper
55 x 75 cm
Edition AP/20 (framed)
\$2,500



Breakoday daisies with Christmas Bells and kangaroo paws
2008
hand coloured woodcut with lapis lazuli on Japanese Hitachi paper
55 x 75 cm
Edition AP/20 (framed)
\$2,500



Pink boronia with wild grevillea
2008
hand coloured woodcut with lapis lazuli on
Japanese Hitachi paper
75 x 55 cm
Edition AP/20 (framed)
\$2,500



Magpie and morning star
2008
hand coloured woodcut with lapis lazuli on Japanese
Hitachi paper
55 x 75 cm
Edition AP/20 (framed)
\$2,500



Native irises with eggs and bacon pea
2008
hand coloured woodcut with lapis lazuli on Japanese mulberry paper
55 x 75 cm
Edition AP/20 (framed)
\$2,500



Banksias
2018
hand coloured woodcut on Japanese Hitachi paper
89 x 69 cm
Edition AP/20 (framed)
\$3,250

CLAYTON UTZ

